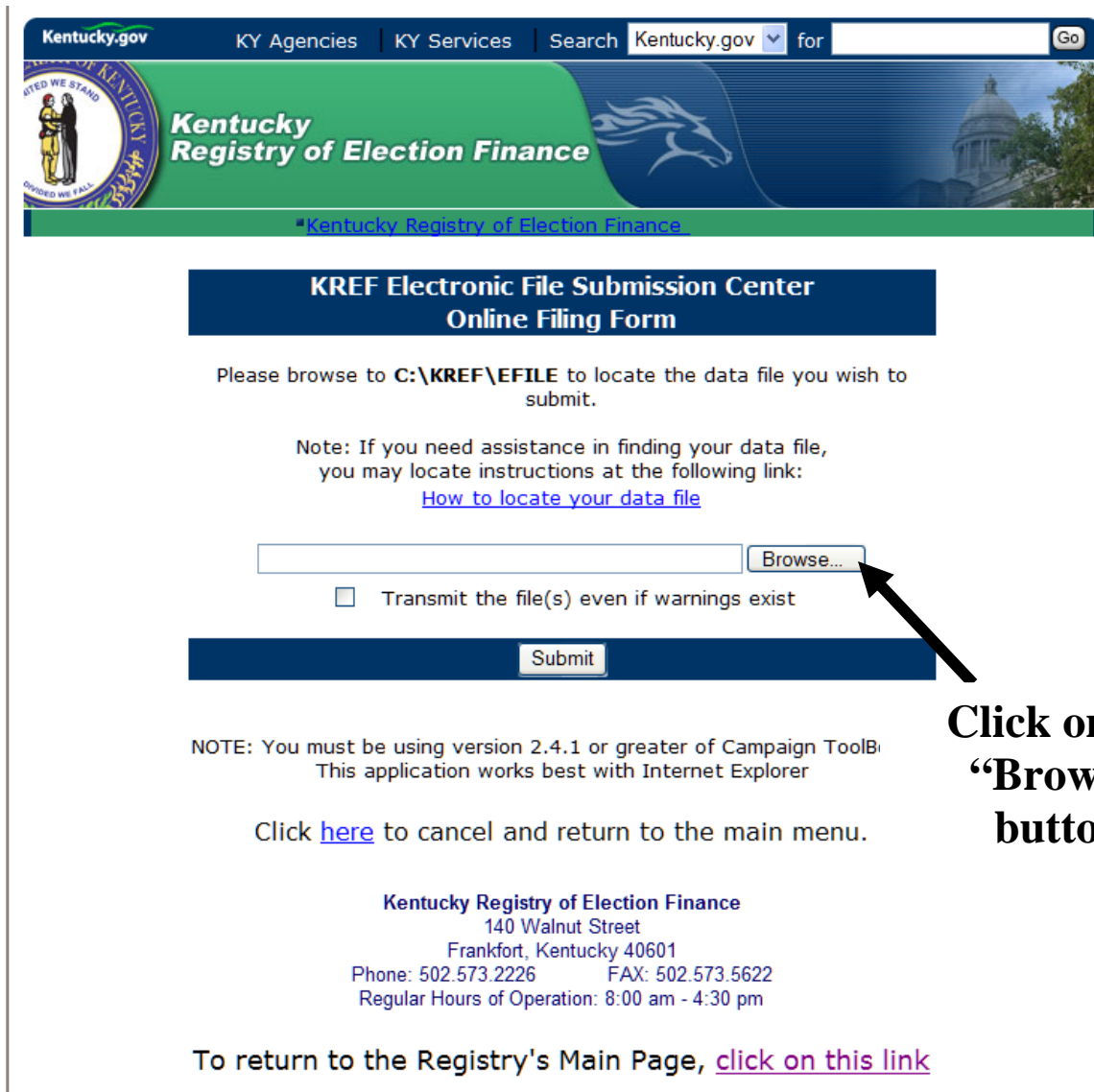


How to Locate Your Data File



The screenshot shows the Kentucky Registry of Election Finance website. At the top, there is a navigation bar with "Kentucky.gov", "KY Agencies", "KY Services", and a search box. Below this is a banner with the Kentucky state seal and the text "Kentucky Registry of Election Finance". The main content area is titled "KREF Electronic File Submission Center Online Filing Form". It contains instructions to browse to a specific file path, a note about assistance, a "Browse..." button, a checkbox for transmitting files with warnings, and a "Submit" button. A black arrow points to the "Browse..." button. Below the form, there is a note about software requirements, a link to cancel, and contact information for the Registry. At the bottom, there is a link to return to the main page.

Kentucky.gov | KY Agencies | KY Services | Search for

Kentucky Registry of Election Finance

**KREF Electronic File Submission Center
Online Filing Form**

Please browse to **C:\KREF\EFILE** to locate the data file you wish to submit.

Note: If you need assistance in finding your data file, you may locate instructions at the following link:
[How to locate your data file](#)

Transmit the file(s) even if warnings exist

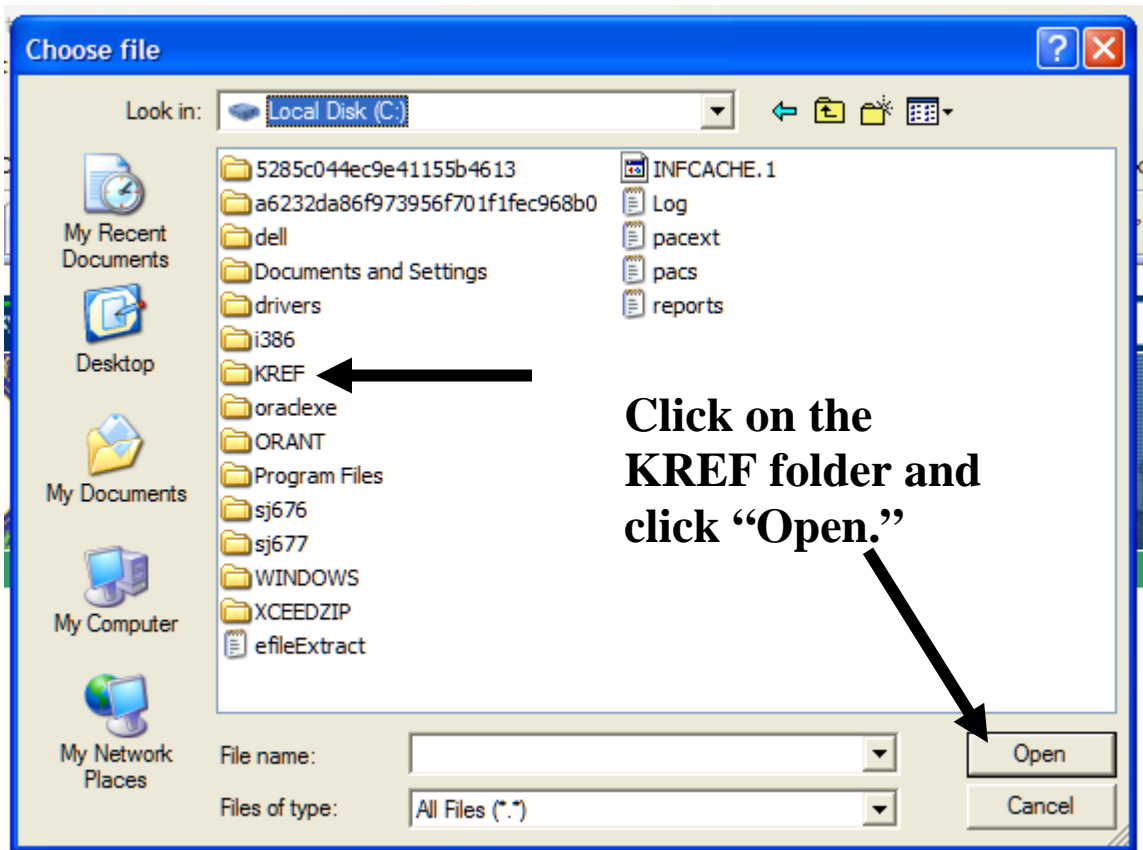
NOTE: You must be using version 2.4.1 or greater of Campaign ToolB
This application works best with Internet Explorer

Click [here](#) to cancel and return to the main menu.

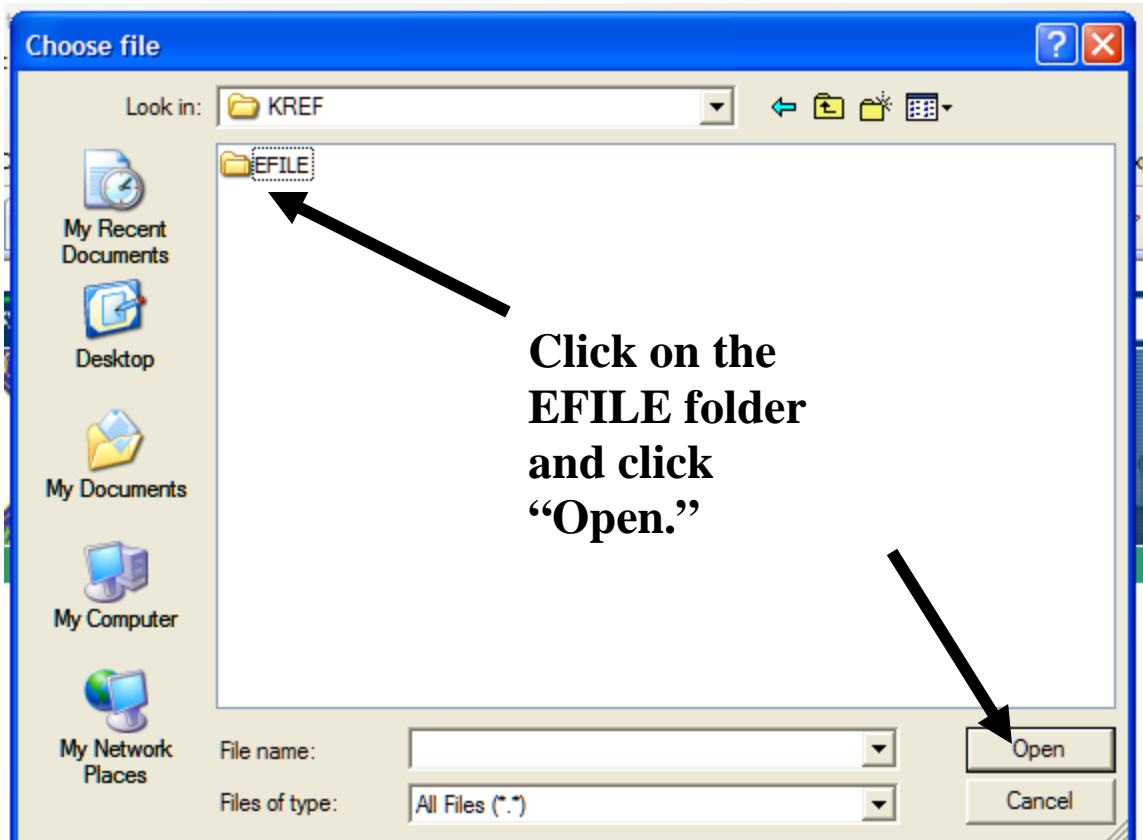
Kentucky Registry of Election Finance
140 Walnut Street
Frankfort, Kentucky 40601
Phone: 502.573.2226 FAX: 502.573.5622
Regular Hours of Operation: 8:00 am - 4:30 pm

To return to the Registry's Main Page, [click on this link](#)

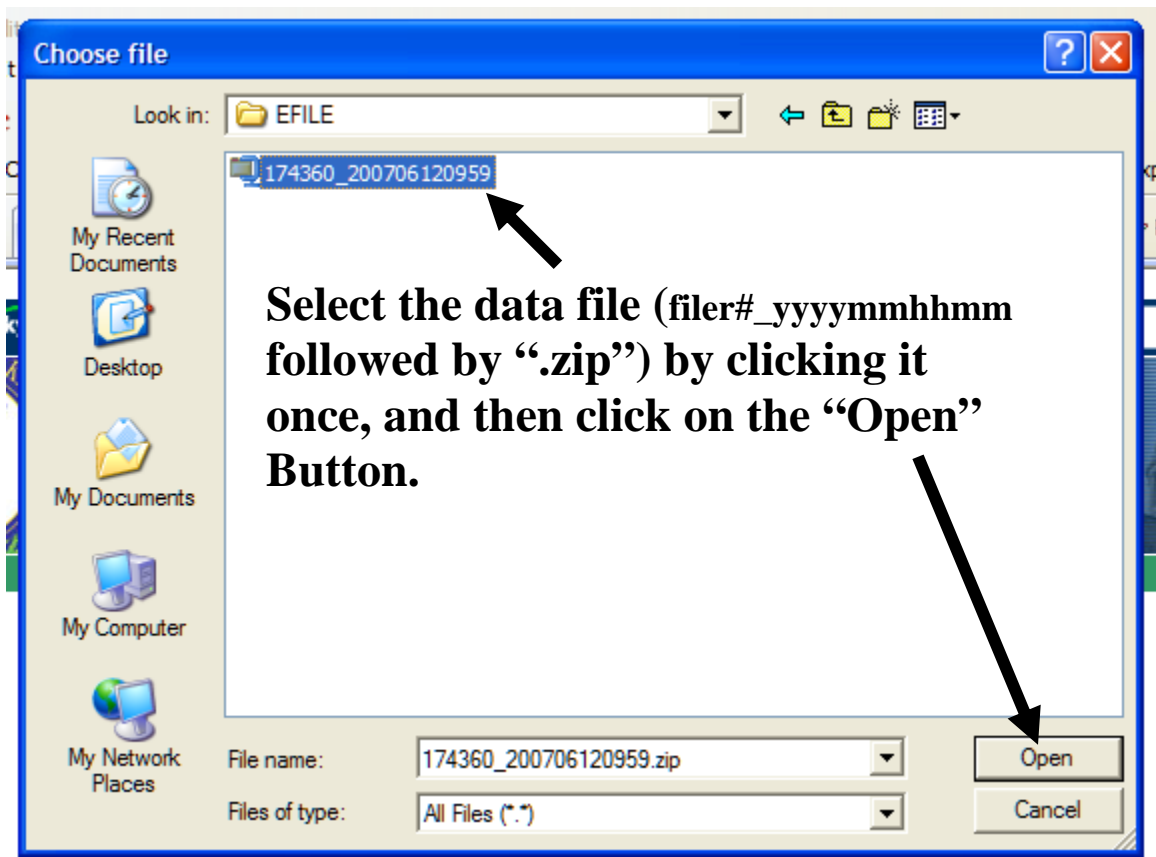
**Click on the
"Browse"
button.**



Note: If you need assistance in finding your data file...



Note: If you need assistance in finding your data file...



Click on the “Submit” button.

KREF Electronic File Submission Center Online Filing Form

Please browse to **C:\KREF\EFILE** to locate the data file you wish to submit.

Note: If you need assistance in finding your data file, you may locate instructions at the following link:

[How to locate your data file](#)

Transmit the file(s) even if warnings exist

NOTE: You must be using version 2.4.1 or greater of Campaign ToolBox.™
This application works best with Internet Explorer